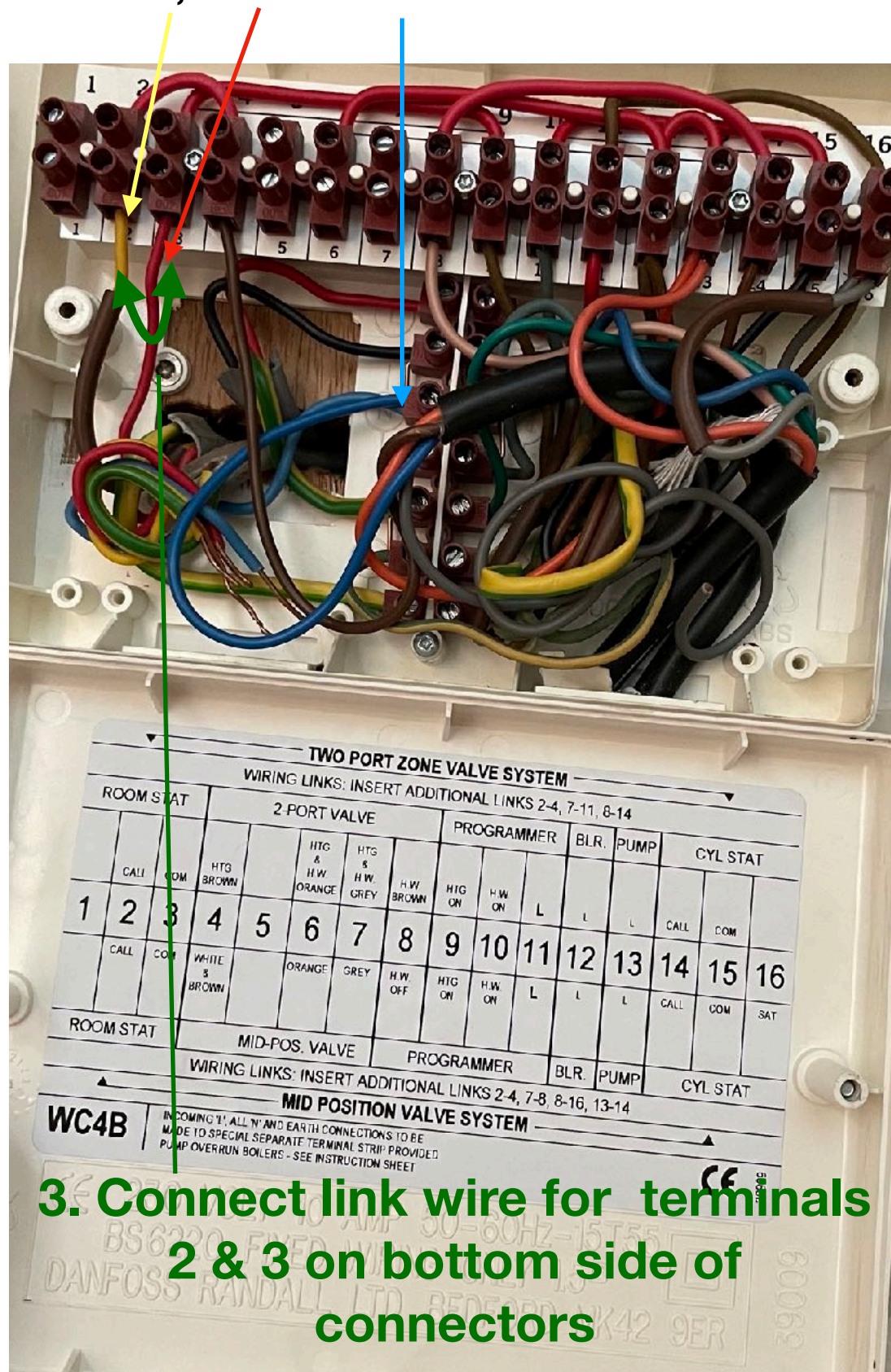


1. Turn power off at mains supply

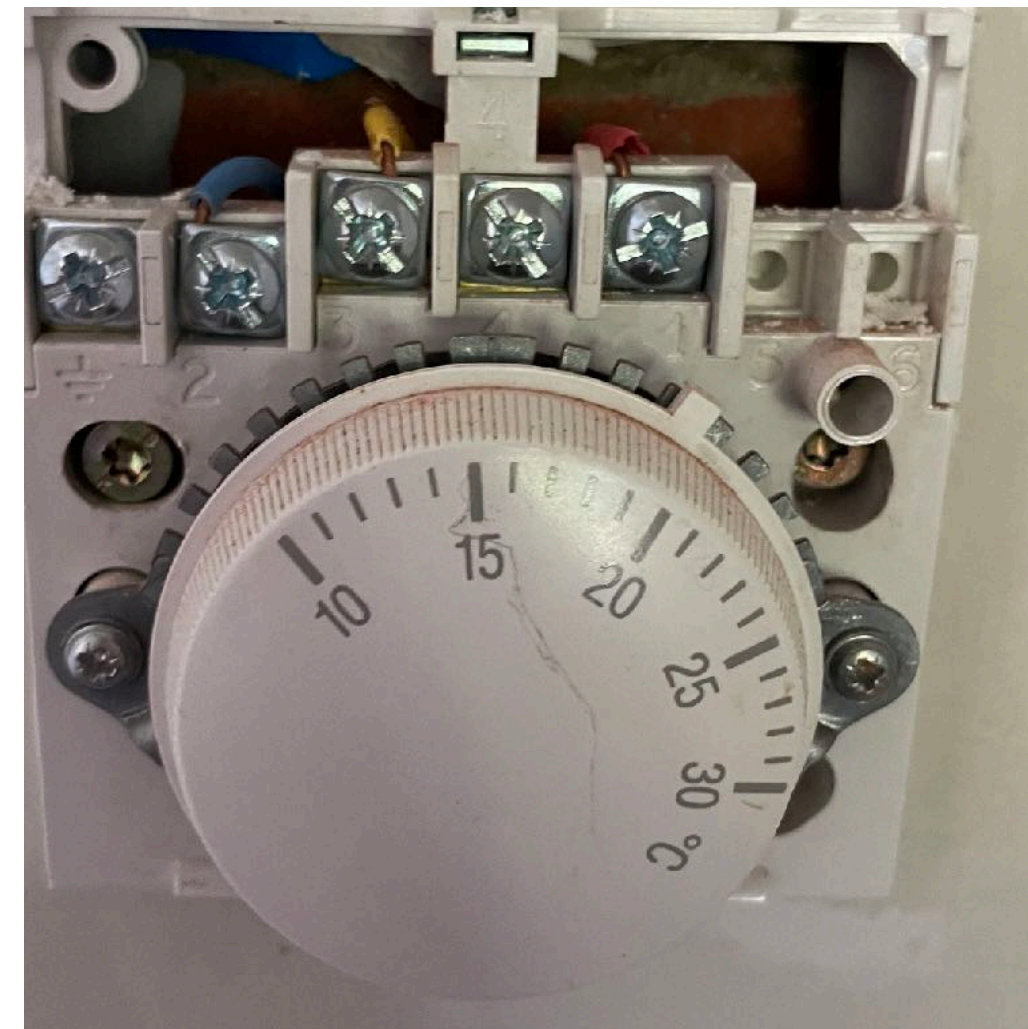
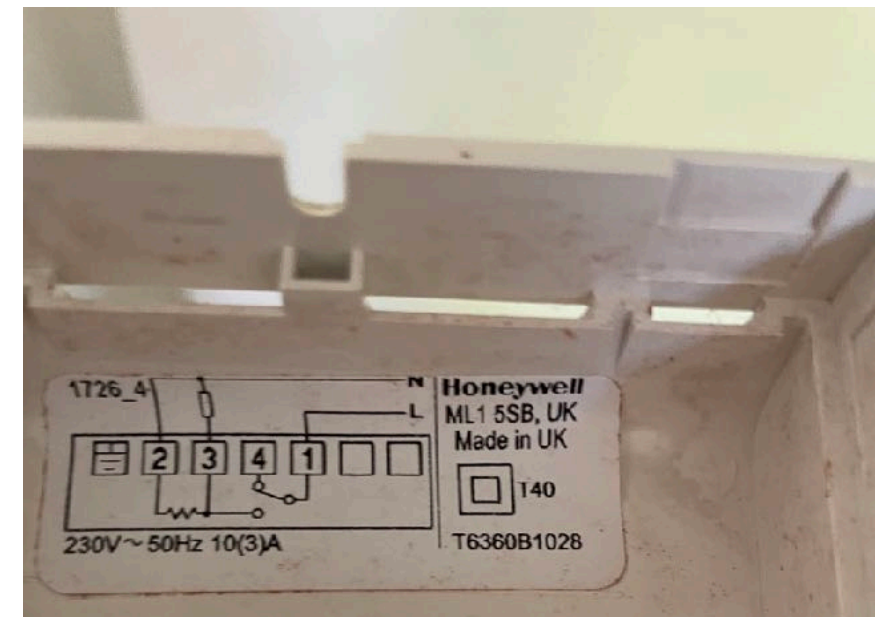
2 . Disconnect call, live & neutral wires from room stat in wiring centre



4. Connect spare wires from stat to connector block

3. Connect link wire for terminals 2 & 3 on bottom side of connectors

Top
Bottom



5 . Disconnect call, live & neutral wires on room stat and remove stat

6. Connect spare wires from room stat to connector block

7. Turn power back on